

lighting today

Volume 4 | October - December 2023

Courtyard by Marriott Tiruchirapalli

This project showcases lighting in
hospitality sector. **p16**





ON THE COVER:
Courtyard by Marriott Tiruchirapalli
Photograph: Yatinder Kumar

VOL 1 / 2024 TOPICS

- **Features:** Lighting in Urban Parks
- **Trends:** Sustainable Lighting
- **Spotlight:** Exclusive Lighting Designer Interview
- **Lighting Product Showcase:** Smart Lighting, Outdoor Lighting, Indoor Lighting, LED Lighting, Lamps / LED, Ballast / Transformers, Lighting Controls, Emergency / Exit

ASSOCIATE PUBLISHER

Eric Ooi

eric.ooi@tradelinkmedia.com.sg

EDITOR

Amita Natverlal

lighting@tradelinkmedia.com.sg

MARKETING MANAGER

Felix Ooi

felix.ooi@tradelinkmedia.com.sg

HEAD OF GRAPHIC DEPARTMENT/ ADVERTISEMMENT COORDINATOR

Fawzeeah Yamin

fawzeeah@tradelinkmedia.com.sg

CIRCULATIONS EXECUTIVE

Yvonne Ooi

yvonne.ooi@tradelinkmedia.com.sg

Dear Readers,

Hello and welcome back to the last issue of 2023. In this issue, we look at the different lighting solutions installed in hospitality projects. Hotels are iconic landmarks in many cities and their success is sometimes due to their facade lighting. Facade lighting makes the hotels recognisable from far and gives them a distinct identity. In interiors, lighting can make an occupant's stay in the hotel comfortable and also provides a safe environment for them. Check out the hotel lighting projects inside. In Trends, we feature two projects on Solar Street Lighting and their positive impact on the residents and public. Also, don't forget to read the news and product showcase sections for the latest industry developments. Enjoy the issue! If you have any comments or feedback, feel free to drop me an email at lighting@tradelinkmedia.com.sg. Take care and we will be back with the 2024 issues of Lighting Today.

Editor

Amita Natverlal

Industry Partners of Lighting Today



National Lighting Bureau

LIGHTING TODAY IS PUBLISHED BY

TRADE LINK MEDIA PTE LTD

1 Paya Lebar Link
#04-01 Paya Lebar Quarter 1 (PLQ 1)
Singapore 408533

For interest in advertising and advertorials,
please attention your query via:
direct call: +65 6842 2580

ISSN 2345-7147 (Print) and
ISSN 2345-7155 (E-periodical)

This publication is published four times a year and
available on the digital platform.

To download a free digital copy,
visit lt.tradelinkmedia.biz.

Other Titles by Trade Link Media Pte Ltd:

Bathroom + Kitchen Today
Southeast Asia Building
Southeast Asia Construction
Security Solutions Today

DISCLAIMER

All advertisers and contributors must ensure all promotional material and editorial information submitted for all our publications, must be free from any infringement on patent rights, copyrights laws in every jurisdiction. Failure of which, they must be fully liable and accountable for legal consequences (if any) that may arise.

The editor reserves all right to omit, amend or alter press releases submitted for publication. The publisher and editor are unable to accept any liability for errors or omissions that may occur in this process, although every effort has been taken to ensure that all information is correct at the time of going to press. Edited articles or stories are returned to contributors for check on facts at the sole discretion of the editor. No portion of this publication may be reproduced in whole or part without written permission of the publisher. The editor reserves all rights to exclude or refuse submissions at any time without prior written or verbal notice if contributing parties do not provide complete text and supporting images at a minimum of 300dpi in .jpeg and .tiff format.

20-22 October 2023**Light Pakistan**

Expo Centre Lahore, Lahore, Pakistan

Website: <https://www.lightpakistanexpo.com/>**22-26 October 2023****China (Guzen) International Lighting Fair**

Guzhen Convention and Exhibition Center, Guzhen, China

Website: <https://en.jiagle.com/lighting-fair/>**26-29 October 2023****Hong Kong International Outdoor and Tech Light Expo 2023**

AsiaWorld-Expo, Hong Kong

Website: <https://www.hktdc.com/event/hkotlexpo/en>**27-30 October 2023****Hong Kong International Lighting Fair (Autumn Edition)**

Hong Kong Convention and Exhibition Centre, Hong Kong

Website: <https://www.hktdc.com/event/hklightingfairae/en>**1-3 November 2023****Thailand Building Fair 2023 (merged with Thailand Lighting Fair)**

Bangkok International Trade & Exhibition Centre, Bangkok, Thailand

Website: <https://thailandbuildingfair.hk.messefrankfurt.com>**2-4 November 2023****IALD Enlighten Americas 2023**

Fairmont Banff Springs, Banff, Canada

Website: https://iald.org/IALD/iCore/Events/Events_List.aspx**2-4 November 2023****LED Expo New Delhi**

Greater Noida, India

Website: <https://led-expo-newdelhi.in.messefrankfurt.com/newdelhi/en.html>**15-17 November 2023****Architecture & Building Services 2023 (see show ad on page 37)**

Marina Bay Sands Singapore Expo & Convention Centre

Exhibition Halls B & C (Level 1), Singapore

Website: www.architecturebuildingservices.com**3-5 December 2023****LDI® Show 2023**

Las Vegas Convention Center, Las Vegas, Nevada, USA

Website: www.ldishow.com**16-18 January 2024****Light + Intelligent Middle East 2024 (see show ad on page 38)**

Dubai World Trade Centre, Dubai, UAE

Website: <https://light-middle-east.ae.messefrankfurt.com/dubai/en.html>**9-12 June 2024****Guangzhou International Lighting Exhibition 2024**

China Import and Export Fair Complex, Guangzhou, China

Website: <https://guangzhou-international-lighting-exhibition.hk.messefrankfurt.com/guangzhou/en.html>



contents

03 EVENTS CALENDAR

05 LIGHTING IN THE NEWS

ARCHITECTURAL LIGHTING (HOSPITALITY AND HEALTHCARE PROJECTS)

12 Marriot Autograph Hotel In Thessaloniki, Greece

16 Courtyard By Marriott Tiruchirapalli In Tamil Nadu, India

TRENDS IN LIGHTING (SOLAR STREET LIGHTING)

22 PBOX X5 Solar Street Lights Installed For Las Machas Beaches Coastal Border Improvement Project, Chile

24 Cmoonlight Palm Tree Series Foldable All-In-One Solar Street Light In Cameroon Africa

SPOTLIGHT: EXCLUSIVE LIGHTING DESIGNER INTERVIEW

26 Interview with Dr. Tran Van Thanh, Creative Director & Co-founder of ASA Lighting Design Studio

30 PRODUCT SHOWCASE



HKTDC Hong Kong International Lighting Fair (Autumn Edition) and Hong Kong International Outdoor and Tech Light Expo to take place in October 2023

Hong Kong – The 8th Hong Kong International Outdoor and Tech Light Expo and the 25th Hong Kong International Lighting Fair (Autumn Edition) will be held on October 26-29, 2023 at AsiaWorld-Expo and October 27-30, 2023 at the Hong Kong Convention and Exhibition Centre respectively.

Organised by the Hong Kong Trade Development Council (HKTDC), the fairs gather more than 3,100 exhibitors, forming a world-renowned lighting marketplace and will be held in EXHIBITION+ hybrid model, complemented by the “Click2Match”, an online smart business matching platform that will operate on 19 October to 6 November, providing a convenient and efficient platform for traders to connect.

Hong Kong International Lighting Fair (Autumn Edition)

This year’s Autumn Lighting Fair will launch a new “Connected Lighting” zone, which demonstrates the possibilities of smart and IoT-enabled lighting solutions from renowned international companies and brands, including DALI Alliance, LEEDARSON, TRIDONIC, Midea, SUNRICHER, SNAPPY, Herculux, and more. The popular “Hall of Aurora” will return bringing excellent lighting products from the world’s top brands, such as Signify, Megaman, Prosperity Group, Traxon | e:cue, Beghelli, Moso, and more.

Other zones include:

- The “Residential Lighting” zone will display functional and decorative household lamps from all over the world to stage a lighting extravaganza;
- The “LED Lighting” zone will showcase the latest and hottest lighting designs in the market;
- The “Smart Lighting and Lighting Solutions” zone will showcase innovative lighting products and solutions;
- The “Commercial Lighting” zone will feature high-quality commercial lighting products that meet the needs of buyers from various industries and match the different lighting purposes of commercial properties.
- The “LED Essentials” zone will bring a comprehensive range of lighting accessories and parts to the fair.”

Hong Kong International Outdoor and Tech Light Expo

International Outdoor and Tech Light Expo gathers a series of commercial and industrial lighting fixtures, providing buyers with a one-stop sourcing platform. The “Innobuild” zone brings together exhibitors from the construction and hardware industry to exhibit construction technology, security, safety, and construction electronic systems, as well as construction materials and hardware.

In response to the upsurge of home smart lamps, smart lighting systems applied in public spaces have become a major industry trend. The “Exterior Lighting Solutions and Systems” zone will gather many latest smart lamps designed for smart cities this year, as well as various energy-efficient,



high-performance lighting systems and technologies to meet the ardent needs of the market.

The “Horticultural Lighting” zone returns this year and brings more new products, including the latest plant lighting technology and plant growth lamps for estates and farms, as well as a series of lighting products suitable for outdoor parks and home gardens. As for the “Technical & Professional Lighting” zone, in addition to various lighting fixtures suitable for professional venues such as warehouses and production rooms, there will be a wide variety of lighting equipment used in large sports venues. The “Outdoor and Public Lighting” zone and the “Outdoor Advertising Lighting” zone will continue to display lamps for outdoor public spaces and outdoor advertising.

Programme activities

A variety of activities such as seminars, lighting product launches, and networking events will be held during the fair period, allowing participants to grasp the latest technological information and innovative developments in the industry, and market trends, and chat with buyers from all over the world to expand their business network. In the seminars, industry leaders will discuss lighting technology applications and opportunities regarding smart and connected technology, healthy lighting, sustainable development of the lighting industry, green lighting design, etc.

Renowned speakers include but not limited to Mr. Jean-Marie Croué, Délégué Général from Syndicat du Luminaire GIL; Ir Prof. Lu Lin Vivien, Professor from The Hong Kong Polytechnic University; Mr. Eric Shiu and Mr. Frankie Tsang, Associate Directors from TinoKwan Lighting Consultants Ltd.; Representatives of Connectivity Standards Alliance Member Group China (CMGC); Representatives of Shanghai Pudong Intelligent Lighting Association.

What’s more, the fairs will also introduce the “Scan2Match” which enables offline-to-online connections. By using the HKTDC Marketplace App, buyers can scan the dedicated QR codes of exhibitors to bookmark their favourite exhibitors, browse product information, view e-floor plans, and chat with exhibitors even after the fair to continue the sourcing journey.

For more information, visit the show websites: www.hktdc.com/event/hklightingfairae/en and www.hktdc.com/event/hkotlexpo/en.

Ayrton welcomes Iain Quinn to its Global Install Team

Villebon-Sur-Yvette, France – Ayrton is delighted to welcome Iain Quinn as the latest member of its growing Global Install Team. The role begins with immediate effect.

Iain brings to the position over thirty years of experience in business development and project management roles with some of the industry's major lighting manufacturers.

Iain will be working alongside Global Install Director, Paul 'PJ' Johnson, focusing on the large-scale, permanent installation market, both on land and sea, exploring and expanding the Ayrton brand on a global scale.

He describes his new role as a 'natural evolution' in his career where his wealth of experience will break new boundaries. "I'm very excited to be joining Ayrton right now," says Iain. "The product is at its absolute peak, the people, company culture, agility and pace are amazing, and the company is in a dynamic phase of growth and development but with an attention to quality that is awe-inspiring. The future potential for my role is extremely exciting and I can't wait to get started."

"Iain's years of experience in project management and business development will be an undeniable asset to our newly formed Global Install Team," says Michael Althaus, Global Sales Director of Ayrton. "His understanding of the global lighting market, specifically in the Middle East, as well as his extensive experience with large-scale projects and his people management skills will play a vital role in the advancement of Ayrton in the install field. PJ and I have great plans for him and intend to keep him very, very busy indeed!"



Lighting Industry Association's 'Sustainability Illuminated' roundtable sparks insights for sustainable future

UK – The Lighting Industry Association (LIA) is delighted to announce the resounding success of its first 'Sustainability Illuminated' Roundtable, held in conjunction with London Climate Action Week 2023.

The roundtable, held at the end of June at Rotherwick House, London, featured a remarkable panel of industry experts who brought a wealth of experience, insight, and innovative ideas to a series of engaging discussions. Attendees explored sustainable practices, identified challenges, and proposed actionable solutions that can drive positive change in the lighting industry.

Leading the roundtable was Bob Bohannon, Head of Policy and Sustainability at the LIA, who expertly facilitated the session. His guidance ensured that conversations were productive, focused, and led to meaningful outcomes.

Some of the key takeaways from the roundtable discussions included:

The industry's Journey:

- Addressing environmental concerns while maintaining lighting quality and performance is the biggest challenge ahead for the lighting industry.



Roundtable

- The industry has already made significant progress in addressing environmental concerns, including the phase-out of incandescent light sources and the adoption of LED technology.

Metrics:

Standardised, cross-industry metrics such as lifecycle assessments and carbon footprint assessments should be adopted to assess environmental impact.

TM66, a useful circular economy metric for street and urban lighting, provides steps for better environmental performance and is rapidly rolling out into other sectors.

Technology:

The lighting industry should make improved use of available technology, design approaches, commissioning, and post-occupancy evaluation to effectively address environmental concerns.

Promoting and implementing technologies such as occupancy sensing and smart lighting can enhance energy efficiency.

Barriers:

A lack of understanding and awareness about sustainability concepts among consumers and stakeholders.

Initial cost considerations of sustainable lighting solutions until they become standardised.

Perception gaps between the industry's sustainability progress and marketplace perception.

Challenges:

Finding solutions for repurposing or recycling legacy products.

Managing the pace of change and striking a balance between new

technologies and supporting older products.

Harmonising global policy and regulations to enhance sustainability efforts.

Direction of Travel:

Aligning regulations with genuine sustainable products and embracing new materials and compositions.

Modular approaches, drawing in young talent, and considering design preferences and consumer expectations.

Controls and enforcement play a vital role in driving sustainability in the industry.

These key takeaways clearly highlight the industry's commitment to sustainability and the challenges it faces. The LIA is determined to address these

challenges head-on and drive positive change within the lighting industry.

"We are thrilled with the resounding success of our first 'Sustainability Illuminated' roundtable," commented Ayça Donaghy, CEO of the LIA.

"The invaluable contributions of our expert panellists made the sessions exceptionally informative, inspiring, and reflective of a collective determination to drive positive change and embrace circularity within the lighting industry. I am eagerly anticipating the engagement and impact the videos from the roundtable will have on the wider industry. As we move forward, we look ahead to our next roundtable and extend an open invitation to even more LIA members to join us on this transformative journey towards a sustainable future."

Ayrton welcomes Vardhaman Megatech as its new distributor for India

France – Ayrton has announced the appointment of Vardhaman Megatech (VMT) as its new, exclusive distributor for India. The appointment takes place with immediate effect.

VMT is a leading professional audio and lighting distribution company with a family history that spans six generations from its formation in 1807. VMT's thriving professional audio and lighting business was first introduced in 1958 and operates through a retail division (VMT Retail) of 13 nationwide stores/offices, an enterprise division (VMT Enterprise) specialising in serving corporate clients and institutions, and a distribution division (VMT Distribution) that represents some of the world's leading brands in professional audio and lighting.

"We are thrilled and honoured to be Ayrton distributors," says VMT's Country Head for Distribution Sales, Kekul Sheth. "Ayrton's reputation for innovation, quality, and excellence in the professional lighting industry is second to none, and we are excited to bring their exceptional product range to our customers."

"The growth of the entertainment and event industry in India, coupled with the rising demand for high-quality productions, creates opportunities for innovative lighting solutions. Ayrton is renowned for pushing the boundaries of technology and design, and their product range aligns perfectly with our commitment to offering cutting-edge solutions to our customers. We are confident that Indian lighting professionals, event organizers, and production companies will appreciate the unmatched quality and capabilities that Ayrton fixtures offer."

"We believe that the partnership with Ayrton will strengthen our position in the professional lighting industry in India and enable us to provide our customers with innovative lighting solutions that meet their highest expectations," adds Jeff Mandot, Director of Sales at VMT.

"We are so happy to welcome VMT into the Ayrton



The team at Vardhaman Megatech, Ayrton's new exclusive distributor for India. From left to right: Kekul Sheth, Jeff Mandot, Vicky Pereira and Rashmi Shirpute.

distribution network," says Michael Althaus, Ayrton's Global Sales Director. "VMT's exceptional customer service and technical knowledge, combined with their total commitment to supporting their customers throughout their Ayrton journey, will ensure VMT customers have all the necessary resources and expertise to make the most of Ayrton's innovative technologies in achieving their creative vision. We are looking forward to seeing the outcomes from this exceptionally creative region."

VMT's immediate plans to develop the Ayrton brand in India include targeted marketing campaigns, online promotions, and participation in industry events to raise awareness. "We will organize training workshops to educate professionals on Ayrton's advanced technologies, and collaborate with designers and production houses to showcase Ayrton fixtures' transformative capabilities in high-profile projects," confirms Sheth.

LIA offers guidance on lamp energy and extends relabelling enforcement deadline

UK – A change in regulation to the energy labelling of lamps will come into force on 1st October 2023, enforcing that any lamps with the current energy labelling must be sold before this date. The Lighting Industry Association (LIA) is offering guidance for the industry on how to prepare for the deadline and ensure that products are sold before that date.

The new regulations by the GB Ecodesign for Energy-Related Products and Energy Information (Lighting Products) Regulations 2021, SI 2021 No. 1095, required that by 1st April 2023 dealers replace any old light source (lamp) energy labels (A++ to E rating) with the new rescaled label (A to G rating). The same requirement applies in the EU/NI from 1st March 2023.

The LIA and the British Retail Consortium (BRC) have been working closely together on this topic, assessing the size and scale of the problem and briefing DESNZ that disruptions to supply chains, reduced retail demand and staff shortages would result in a significant volume of lighting products being still on the UK market with the old A-D Energy Label after the deadline of 1st April 2023.

The LIA and the BRC, were therefore very pleased to secure a six-month delay to this GB relabelling date from DESNZ/OPSS until 1st October 2023.

Ayça Donaghy, CEO of the LIA, commented: “We would like to thank Lord Callanan, Minister for Energy Security and Green Finance at the Department for Energy Security and Net Zero (DESNZ), and the team for listening to our concerns and subsequently granting the needed extension. As well as talking directly to DESNZ, the LIA helped its members lobby their local MPs – both showing the value of an effective industry association to its members, doing their job of supporting and representing their membership. This extension will grant those in the industry valuable time to prepare their products for the new market regulations in October.”

Firstly, companies should now ensure they contact supply chain partners and make them aware of the extension. Following this, the LIA have put together a helpful guide, available to the entire lighting industry, with strategies to reduce stocks featuring the old energy label. Tips to reduce stock already in place include stock rotation, promotions, and donation.

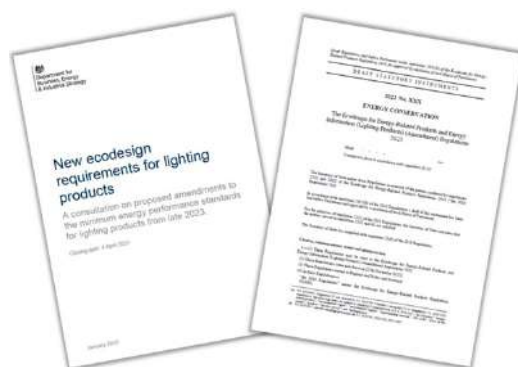
Bob Bohannon, Head of Policy and Sustainability at the LIA, added: “It is our responsibility as an industry to use the six-month extension granted by DESNZ. The LIA are proud to spread awareness and guidance for those in the industry, encouraging companies to work with up and downstream supply chains, rotate stock on shelves to ensure any old labelled stock is at the front, sell stock through and ultimately relabel



Ayça Donaghy, CEO of the LIA.



Bob Bohannon, Head of Policy and Sustainability at the LIA.



DESNZ update



Relabelling new and old.

any remaining stock with the new A-G label. We are hopeful that with our support, companies will be in a better position to prepare themselves for October and reduce any losses by ensuring stock can be sold.”

The LIA's full guidance can be found here https://cdn.ymaws.com/www.thelia.org.uk/resource/resmgr/website_2023/newsletters/lamps_advice.pdf

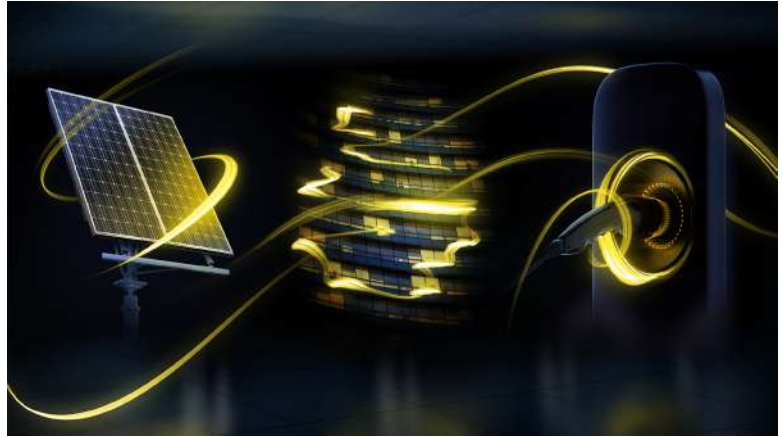
Light + Building 2024: a symbiosis of lighting and connected building-services technology

Frankfurt am Main – Modern building-services technology stands for efficient energy usage, individual improvements in the levels of comfort and convenience, as well as all-round safety and security. Lighting is an elementary building block of the built-up world. It not only sets visual accents and, under ideal circumstances, combines aesthetically with the architecture but also provides functional benefits. Light + Building in Frankfurt am Main from 3 to 8 March 2024 covers the spectrum from intelligent lighting technology to future-oriented home and building technology.

Thanks to this unrivalled combination, the world's leading trade fair for lighting and building-services technology is the foremost international meeting place for experts, manufacturers, planners, architects and investors, all of whom take advantage of this innovation show to discover future-oriented solutions. Additionally, the focus is on the exchange of knowledge, making new business and gaining inspiration. "Light + Building is the ideal platform to find the latest developments and enter into a dialogue with experts from the international sector. Nowhere else is this direct combination of lighting expertise and forward-looking home and building-services technology to be found", says Light + Building Director Johannes Möller.

As the leading platform for the sector, Light + Building spotlights the subjects that have a decisive impact on the exhibiting companies. "The way in which people live, work and interact in towns and in buildings is changing continuously. Therefore, tomorrow's building-services technology must be able to adapt to the changing and varying demands placed on it. We need interfaces for new sources of energy, the systems must be interoperable and efficient operation should be a matter of course in terms of emissions and economic efficiency", explains Johannes Möller. Electrification represents the foundation stone for greater sustainability and a building sector capable of meeting future demands. Accordingly, the motto of the world's leading trade fair in 2024 is 'Be Electrified'. Based on this motto, three top themes – 'Sustainability', 'Connectivity' and 'Work + Living' – specify the factors set to be essential for living, working and mobility in tomorrow's world. Throughout Light + Building, they constitute the common thread for lectures, guided tours and special shows.

For more information, visit www.light-building.messefrankfurt.com.



From photovoltaic systems to EV charging: one of the fields covered in the 'Sustainability' theme is the efficient management of energy and consumption in buildings." Source: Messe Frankfurt Exhibition GmbH



In future-proof buildings, systems work interoperably and can be expanded and adapted as required. The 'Connectivity' theme focuses on digitalisation, networking, safety and security. Source: Messe Frankfurt Exhibition GmbH



The design and organization of spaces has an impact on the quality of life. The use of modern lighting technology plays a significant role in this. The 'Work + Living' theme focuses on the various areas of application. Source: Messe Frankfurt Exhibition GmbH

Key team promotion for Lighting Design International

London, UK – Lighting Design International has announced the promotion of one of its team's senior designers, to the role of associate. Sandra Brookes will assume the role with immediate effect, strengthening the practice's 20-strong senior management team.

A trained architect and lighting designer, Sandra has over 20 years' experience in the lighting industry. Since joining LDI in 2017 she has been working on a diverse range of projects, from luxury residences, superyachts, high-end restaurants and exclusive 5-star hotels worldwide.

Sandra trained at The Bartlett School of Architecture and – being fluent in Spanish – studied at the Universidad de Los Andes, Colombia, where she gained valuable insights in her architectural studies. Sandra was given the opportunity to study in the Danish Royal Academy of Arts, where she continued her architecture training.

It was in Denmark that she decided to pursue a career in lighting design, as the Danish sensibilities to light made her aware of its subtle yet powerful ability to change and enhance architecture.

Sandra's projects include the Four Seasons Astir Palace Hotel in Greece which won the Best lighting for the Bar & Restaurant awards for the Avra Lounge, and the newly opened Four Seasons Hotel Doha, Qatar.

Sally Storey, Founding Director of Lighting Design International, said: "We are exceptionally fortunate to have Sandra as part of our team. Her international experience on a range of complex, high-profile projects along with her unique talents and conceptual expression in lighting design, make her a real asset to the team. I would like to extend my personal thanks and congratulations to Sandra for a job well done and I look forward to seeing her take flight in her new role."

On her promotion, Sandra said: "I've always had a passion for lighting design and have relished the opportunity to work on some fantastic projects that have indulged my creativity and problem-solving. I feel very much at home here at Lighting Design International – the team is so friendly, talented and passionate, it really does feel like we are part of something special."



Sandra Brookes, Associate at Lighting Design International.

Nora Lighting opens new Learning and Experience Center in Los Angeles

Commerce, California, USA – Nora Lighting, a leading provider of lighting solutions, has announced the opening of its new Learning and Experience Center (LEC) in Los Angeles, California. The Nora LEC, located at 6505 Gayhart Street, Commerce, CA 90040, showcases Nora Lighting's full line of products, services and provides a space to train sales reps and customers.

"We are excited to open this new space in Los Angeles, CA," said Fred Farzan, President at Nora Lighting. "The Nora Learning and Experience Center will allow us to better serve our customers and provide them with an opportunity to experience our products and services firsthand."

The new centre features a wide variety of products and installations from Nora Lighting. Sales representatives and customers can speak with their regional sales manager to schedule a visit and learn more about our products and services.



Photo credit: Nora Lighting

Lighting studio Nulty expands in Asia with newest office in Singapore

Singapore – International lighting design studio Nulty has opened a new Singapore office in response to a recent influx of work across Southeast Asia.

Nulty Singapore is the company's sixth international studio and its third base in Asia following the launch of Bangkok in 2019 and Pune in 2022. The expansion comes off the back of several active years in the region, which have seen the team develop a growing pipeline of projects, including multiple high-end hotels and F&B outlets, a premier fashion store in Manila, and a private hospital in Bangkok.

The new studio will be led by Chloe Fung, a highly skilled and creative lighting design professional who has amassed valuable on-the-ground expertise working for lighting design practices in both Singapore and Hong Kong. Chloe will work in close partnership with Founder Paul Nulty, Managing Director Mark Vowles, and Director Simon Berry, an ex-resident who spent over 10 years in Singapore leading the lighting design arm at global hospitality firm Hirsch Bedner Associates.

Paul Nulty, Founder, Nulty comments; "Forward-thinking architecture and talented designers have always been intrinsic to Singapore, so it's been in our sights for a while as we



Paul Nulty, Founder, Nulty



Chloe Fung



Mark Vowles



Simon Berry

look to establish a creative base across Asia. The launch comes at a crucial time for us as a business, as the scale and complexity of our work in Asia continues to evolve. It will be a huge advantage to have a local office to complement our

Bangkok outpost and we are delighted to have Chloe at the helm. She'll work collaboratively with our 25-strong team of designers across Asia, building on the great results that our team has achieved so far."

Follow us on Social Media







Marriott Autograph Hotel

Thessaloniki, Greece

PROJECT NAME

Marriot Autograph Hotel

PROJECT LOCATION

Thessaloniki, Greece

CLIENT

Michaniki Perivallontos

ARCHITECT

D2C2 Architects & Engineers,
DelBlu Architetti, Greece

LIGHTING DESIGN

Eleftheria Deko & Associates, Greece

INTERIOR DESIGN

Not A Number Architects, Greece

LIGHTING SOLUTIONS

Lucent Lighting

PHOTOGRAPHY

Gavriil Papadiotis / Archive: Eleftheria Deko





The Marriot Autograph welcomes its latest addition, the Monasty Hotel, the first international five-star hotel in the centre of Thessaloniki, Greece. Located near the iconic Aristotelous Square and Saint Theodora convent, this striking architecture was the inspiration for the hotel's identity and reflected throughout its design.

The key aim of the lighting was to discreetly illuminate the architecture and interiors, accenting the materiality of the surfaces while enhancing the atmosphere. Architectural design by D2C2 architects and DelBlu Architetti, with interior design by Not Another Number Architects, was incorporated with lighting design by Eleftheria Deko & Associates. Eleftheria Deko & Associates specified Lucent Lighting's product range for this project, bringing to light the ecclesiastical references and inspiration.

The hotel's design is minimalist throughout, from the architecture to the natural colour palette and textures. Yet the guestrooms stand out with striking architecture, featuring unique fixtures and decorative touches which reflect the ecclesiastical inspiration. The subtle lighting illuminates the warm colours to create a soft and welcoming ambience, promoting comfort and relaxation.



Lucent's Edge90 Accent Trim downlight blends seamlessly into the ceiling design, casting a discreet downwards glow to set the atmosphere and capture details by accenting intricate details with light. Micro40 Disc round fixed miniature downlights are also implemented throughout public areas and guestrooms, with a black, anti-glare shield for a subtle radiance.

Lucent's products are used to cast several lighting layers throughout each space, creating varied moods and tones. The lighting shifts to warmer tones as the day progresses, transitioning from day to night to reflect an intimate mood and atmosphere. The lighting is controlled by an architectural lighting control system, providing low power consumption and flexibility for the hotel.

The hotel is a unique venue full of character, the lighting design amplifies the stunning interiors to achieve an overall charming and welcoming atmosphere for guests to enjoy while on a luxurious visit to Greece.



Facade of Courtyard by Marriott Tiruchirapalli.



Courtyard by Marriott Tiruchirapalli

- A fine blend of tradition and modernity

Tamil Nadu, India

PROJECT NAME

Courtyard by Marriott Tiruchirapalli

PROJECT LOCATION

Tamil Nadu, India

CLIENT

Sangam Hotels

ARCHITECTURE

VKTs

INTERIOR DESIGN

TID

PROJECT MANAGEMENT

Krishnaswamy

LIGHTING DESIGN

Lighting Research & Design

LUMINAIRE SUPPLY

Anura; Equinox Lighting; Gojis Lifestyle

LUMINAIRE BRANDS

Hybec; K-Lite; Ledos

PHOTOGRAPHS

Yatinder Kumar



Lobby



Trichy Kitchen



Vasantham Banquet Hall

Tiruchirappalli is the fourth largest city in Tamil Nadu, situated on the banks of the river Cauvery. It is a fine blend of tradition and modernity built around the Rock Fort, a citadel of the early Cholas which later fell to the Pallavas. The Rockfort Temple, a spectacular monument perched on a massive rocky out crop which rises abruptly from the plain to tower over the old city is the most famous landmark of this bustling town. The Sri Ranganathaswamy Temple built on an island in the middle of Cauvery River is another landmark in its vicinity renowned for being one of the largest and most interesting temple complexes in India. Given the overpowering context of the Rockfort and Srirangam temples, the contemporary design of the recently renovated Courtyard by Marriott at Tiruchirappalli had to reflect a storyline of architectural elements derived from these temples. The storyline is continued throughout the hotel by layering and repeating the patterns such as rectilinear patterns to create an impactful illusion.



Ninvantham Banquet Hall



Nanjai Banquet Hall

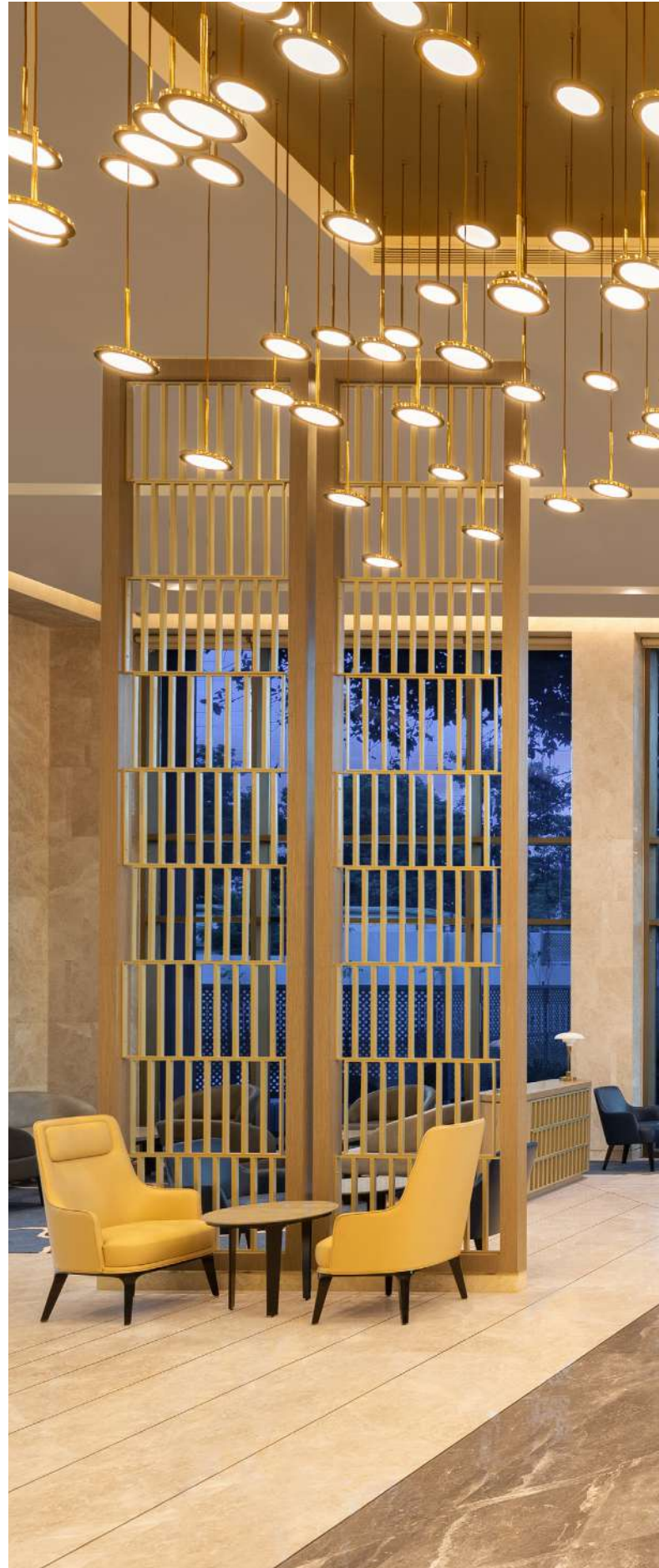
The architecture firm VKTs in collaboration with the interior design firm TID created the final design for the hotel. Lighting Research & Design was onboarded for the lighting, given the client's previous experience on working with the same team. The renovation of the hotel's exterior demanded a graceful facade illumination that would complement the hotel's own history. The facade consists of two angularly juxtaposed building blocks: the main block containing the main entrance and lobby, and the secondary block entirely populated with guestroom windows and other balconies. The dimensions of the building are modest: it does not exceed 2-storeys in height for the main block and two more for the secondary block. The building façade facing the main road were naturally illuminated with windows and required minimal external treatment such as the narrow bands below windows that were illuminated by sleek linear grazers (Ledos).

The Gopuram (tower) of Srirangam temple became the inspiration for the design of the reception back drop at the lobby using a very colourful interpretation within a certain palette. The rest of the backdrop is kept light and in one tone of wood in order for the gopuram design to stand out. The entire backdrop wall is illuminated using special linear power grazer luminaires (K-Lite). The lobby centrepiece consists of a custom-designed decorative chandelier (Equinox), which is an interpretation of an inverted gopuram. The T Lounge (Lobby lounge) continues the earthy tones of the Courtyard Marriott brand palette involving rich marble flooring with grid line patterns inspired by the Temple architecture. Adjustable pull-out spotlights (K-Lite) neatly concealed within ceiling slots illuminate the lounge area.

The All Day Dining known as Trichy Kitchen comprises a storyline of architectural elements that form a pattern above the buffet counter as a design feature. Printed tiles form a highlight for the island buffet and rest of the flooring consists of homogeneous cement tiles and Italian marble. Indirect lighting using coves is the primary source of illumination supplemented by decorative pendants with LED filament lamps that provide a retro look. Magnetic track-mounted mini-spotlights (Hybec) illuminate the food items in the buffet counters.

The hotels boasts of several banquet halls and meeting rooms of various sizes, as well as large pre-function halls. Each hall has a unique bold carpet bringing out the colour in the space. Walls have been kept neutral to act as a backdrop for the functions own colour. The Banquet Hall Pre-function flooring has interspersed grid lines, with brass inlay continued from the lobby patterns and artwork on the walls to add colour to the earthy combination of marble and wallpaper on walls. The artwork on the walls are illuminated with the same linear power grazer luminaires used in the lobby. Focus is on the use of diffuse and indirect lighting in the form of custom linear profiles and cove lighting respectively, as much as possible. The Vasantham Banquet Hall is well known in the city and hosts many conferences and weddings. The elaborate chandelier (Equinox) made of glass and metal is its main focal point. The other smaller halls namely Nanjai and Ninvantham are all illuminated with a combination of indirect lighting using cove lights and direct lighting using the adjustable pull-out spotlights.

Simple yet stylised lighting is used throughout the hotel right from the façade to all its interiors so as to provide a unified look of tradition and modernity.





T Lounge



PBOX X5 Solar Street Lights Installed For Las Machas Beaches Coastal Border Improvement Project, Chile

Project Overview

The Las Machas Beaches Coastal Border Improvement project began in 2021 and ended in 2023. The project is divided into three phases, and involves PBOX X5 solar street lights as manufactured by Leadsun factory in China and supplied by Leadsun Chile. The application of PBOX X5 solar street lights provides better outdoor lighting for pedestrian walkways and landscaping areas along the sea, also promoted beach accessibility.

This Project is part of a Plan for the Improvement of Coastal Edges and Fishing Coves, developed by the Government of Chile through the Directorate of Port Works of the Ministry of Public Works with works that are carried out throughout the entire Atacama Region, with the purpose of contributing to the productive, social, recreational and tourist development, providing adequate infrastructure services for the improvement of the quality of life.

The infrastructure improvement along the coastal edge of Las Machas Beach includes the installation of solar street lights, the lighting improvement of footpaths, and the parking lots.

Project Requirement

Currently, the coastal edge of Las Machas Beach is an area in high demand by joggers and cyclists. However, basic safety conditions such as lighting, good pavement, and bike lanes are not available. This, coupled with irresponsible driving, has resulted in unfortunate accidents with fatal consequences.

Therefore, it is important to rebuild the coastline area, especially the lighting condition of pedestrian and bicycle paths.

The coastal lighting project is one of the key points of beach

infrastructure improvement, including the reconstruction and lighting design of sidewalks and parking lots.

Chile has unique terrain with the coastline. It becomes a part of residents' life to hold various activities by there. The public lighting required along the way is in particular luminous, which is not only required to provide security for local residents, but also to withstand the test from the seaside climate.

There are some outdoor lighting challenges to overcome. High demands are placed not only on water resistance but also on corrosion-resistant materials and wind resistance ratings. It is important to be able to withstand extreme weather conditions without compromising the aesthetics and technology of the lighting product.

Solution From Pbox Lighting

The Well-designed X5 Smart Solar Street Lights

PBOX offered the well-designed X5 smart solar LED lights for this project, which is resistant to level 16 typhoon and reach to the degree of IP66, can withstand extreme weather without compromising the aesthetics or technology of the lighting product. PBOX X5 uses a super aluminum frame, which is light weight, strong and corrosion resistant, making it able to resist strong wind load of up to 130MPH. Stainless steel screws are used as fasteners to protect against any harsh weather.

High-efficient LED with Excellent Heat Dissipation

High-efficient led with excellent heat dissipation creates a first-class light source. By choosing the top brands 5W LED chips, single lumen value up to 200lm/W (@25 °C), with the aluminum lamp base and sealed lens, with its excellent

heat dissipation, it is as if the LED chip has been placed in a sealed unit. Thus it maintains high brightness levels with very little fading. The sealed lenses are made of strong UV protected PC and are aging and shock resistant; The well-optimized light distribution makes a more uniform illumination and wider lighting area.

Easy Installation Of The Off-Grid Lighting System

The off-grid lighting solution was successfully installed. No trenching or cable costs. Each solar light is a self-contained system, which can skip paying for trenching, wiring and labor altogether when installing street lights. All we needed is to ensure that the light posts are mounted securely.

Price Savings With Average Percentage For Projects

The average percentage price savings for a solar lighting project, from the initial quote to the first night of operation, is often 20-30% over traditional street lights, and in some projects can even be as high as 40%, depending on the needs of the project.

Energy Saving And Easy Maintenance

In addition, a good quality solar road can often last a minimum of 8-10 years or more with very little maintenance, and a properly designed solar light has about 3-5 days of autonomy, and the light will work as usual even on cloudy days. Even in the case of natural or man-made disasters, such as earthquakes and fires that damage the power grid, they can still provide stable lighting.

Intelligent Steady State Controller

Another convenience is the simple installation of integrated solar lighting systems, with intelligent controller.



There is no need for a separate battery pack and there are no complicated wires or setups. All you need to do is to attach it to a post with some screws. Through the controller of the X5 solar street light, it will automatically switch on at dusk and off at dawn. It will reduce energy consumption.

Complete Aluminum Frame Structure

Environmental risks are reduced in the application of excellent structure strength. The modular structure of the PBOX X5 is well at protecting the essential parts of the street lights. It reaches IP66 protection grade, effectively isolating humidity, dust, and heat invasion. It helps to overcome the challenges of harsh outdoor environments.

Project Highlight

Clean energy lighting is one of the most beneficial improvements for coastal cities. Solar lights do not require complicated installation and wiring to illuminate the seaside. Off-grid solar systems do a great job of providing environmental protection. Each individual components made therobust lighting system. Aluminum Frame Structure, with shaped structure section is similar to that of the railway track section. Increased the strength and structural stability.

Renewable Clean energy is environmentally friendly. It is well known that solar street lights use renewable energy instead of fossil fuels, which contributes a lot to the sustainability of the city. The installation of solar street lights also avoids damage to the environment as there is no need to excavate power lines. It brings long-term benefits to the city.

Increased public safety and use of community spaces. Walking trails, shared pathways and car parks become more inviting and accessible with solar street lighting, encouraging greater activity and use of shared community spaces. Solar street lighting also makes for safer community spaces. Ambient and welcoming shared community spaces inspire increased activity and engagement.

Mayor Ignacio Urcullú, pointed out, "The Improvement of the Coastal Edge will add even more life to the beautiful natural landscape we have here. We are very pleased that we are delivering a high quality, high standard of work with excellent materials that will allow residents and visitors to the harbour to safely and calmly enjoy a wonderful space with spectacular sea views. This is a project that has been worked on over a long period of time and the RDF investment is very important. We call on the whole community to take care of it, to make it their own place and to enjoy it like a family, where they can play with their children and where the elderly can rest".



All photos courtesy of PBOX Lighting.



Cmoonlight Palm Tree Series Foldable All-In-One Solar Street Light In Cameroon Africa

Photo credit: Cmoonlight

Cmoonlight is a professional solar-powered street light manufacturer with high quality and 10 years of experience in China. The company has various certifications such as IP67, IK10, SC, GS, COC, and CB IECCE Saber for Saudi Arabia. Foldable All-In-One design is easy to install and high efficiency.

About 200 pieces of Cmoonlight 64-watt Foldable All-In-One solar street light with 6-metre poles, were installed on a road in Foumban, Cameroon. Poles distance is 30 metres.



Photo credit: Cmoonlight

Before installing the solar street lights, there was no light at all at the night. Driving cars and walking are very dangerous. Now with the lighting, life is better for the people.

This Foldable All-In-One solar street light has helped local people solve the safety of driving and walking, ensure traffic safety. It has brought a lot of convenience for driving and walking.



Photo credit: Cmoonlight

lighting today

Lighting Today is an architectural and entertainment lighting news portal which targets professionals in lighting industry including lighting designers, consultants, architects, interior designers, engineers, developers, estate management, event organisers and end users. We provide multiple platforms for our clients to communicate their target audience effectively. Scan the QR code below to access the quarterly digital magazine on our news portal and social media platforms.

**Scan QR code below to read our news.
Sign up for free subscription.**



Connect with us on social media!



[www.facebook.com/
LightingToday](https://www.facebook.com/LightingToday)



[www.twitter.com/
LightingToday](https://www.twitter.com/LightingToday)



[www.linkedin.com/
groups/3927350](https://www.linkedin.com/groups/3927350)



[www.instagram.com/
lightingtodaysg](https://www.instagram.com/lightingtodaysg)



[www.yumpu.com/
user/tradelinkmedia](https://www.yumpu.com/user/tradelinkmedia)



Dr. Tran Van Thanh

Interview with Dr. Tran Van Thanh, Creative Director & Co-founder of ASA Lighting Design Studio

LT: *When did you start ASA Lighting Design Studios (ASA)?*

Thanh: My business partner, Khoa Nguyen, and I started ASA in 2012. Before forming the company, I spent more than 10 years working as a lighting designer in Europe. I worked first for Ulrike Brandi in Germany, and later in the UK for renowned British lighting designer Maurice Brill at MBLD. Altogether, I have been in lighting design for more than 20 years.

Before ASA, I worked on projects in different parts of the world, from a museum in Stuttgart to a train station in London and from the National Assembly in Bahrain to luxury hotels by the Red Sea in Egypt and a resort in South Africa.

Khoa and I started to work together in the early 2010s. Vietnam was booming, with huge demand for new construction projects. Lighting design was a new profession, and it is still very new in Vietnam. I was one of the first trained Vietnamese lighting designers, and ASA is proud to be the first professional lighting practice in the country.

We brought our global expertise to Vietnam and promoted professional lighting practice. Though we had a good understanding of the local market, we also had to deal with the constraints of a young market lacking talent and resources.

One of our biggest challenges was human resources. There is no lighting design training at all – nobody knows what lighting design is – and very few people wanted to work in a

new profession. We had to build everything from scratch. I hosted lighting talks, talked to universities to create the first-ever lighting design courses, offered scholarships to students passionate about lighting, taught at universities, and worked with government agencies to raise public awareness of good lighting. It has been a lot of hard work to be the pioneer.

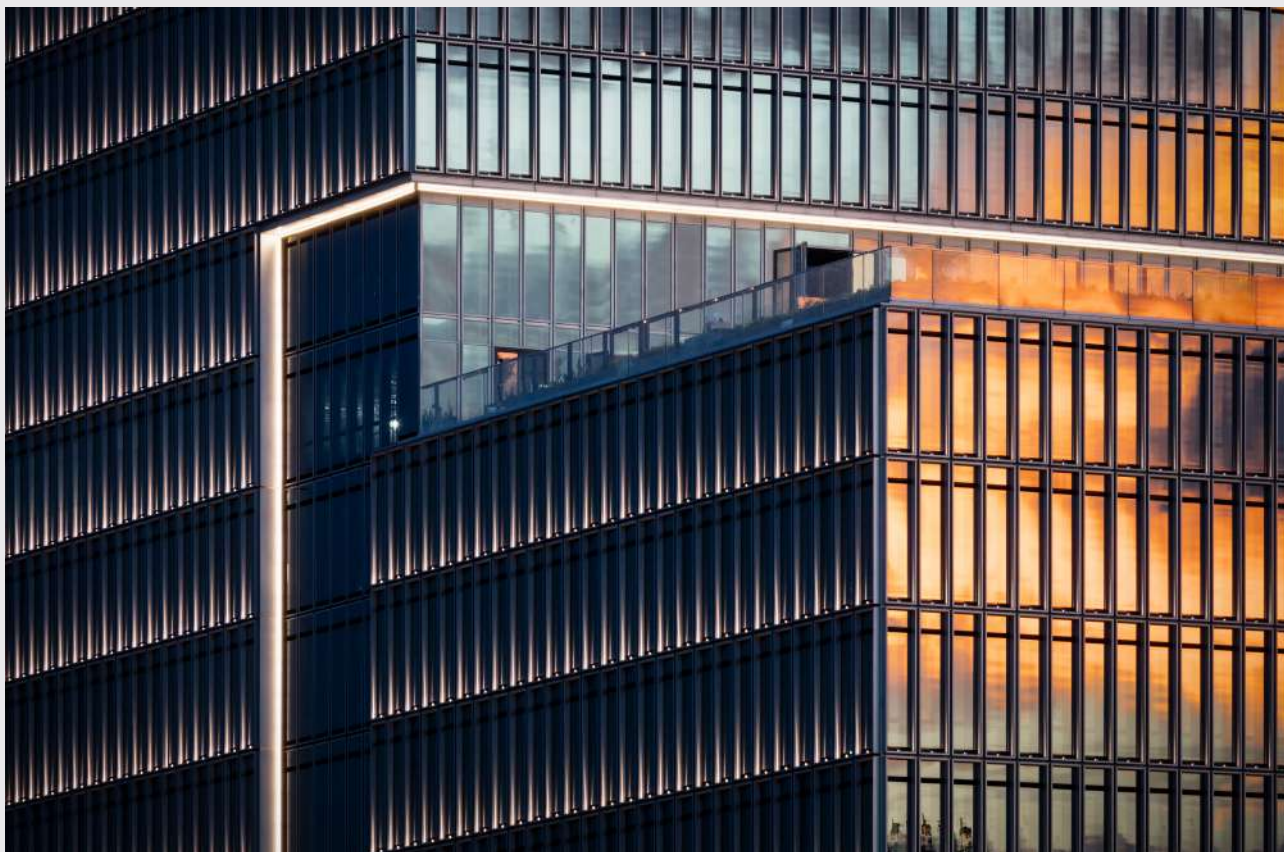
Today, we are known in Vietnam as the first and best lighting designers. With that solid foundation, we have now grown to become one of the leading lighting design studios in Southeast Asia, winning several lighting design awards and successfully completing more than 200 projects.

LT: *Why did you choose this name for your firm – ASA?*

Thanh: I wanted this company to belong to everyone who works for it. In other words, I didn't want it to be linked to anyone's name. All of us at ASA should have a sense of ownership, responsibility, drive, and reward for its success. That means we will always be unique, creative, innovative, and proud of our origins.

To be good at something, you first need to be passionate about it. We are lighting designers and, as such, we are passionate about light and sensitive to it.

In photography, ASA is the measurement of film speed, also known as photosensitivity. In fact, ASA has many positive meanings that I feel an affinity with. In Vietnamese, ASA is



Deutsches Haus

Location: Ho Chi Minh City, Vietnam

Architect: Gerkan, Marg and Partners – GMP, Germany

Photo Credit: Marcus Bredt

“The best design is honest... we are true to the purposes of how a space should be illuminated, how the users will feel, and how it inspires people.”

– Dr. Tran Van Thanh

an abbreviation of Ánh Sáng, which means light. In Japanese, it means morning. In Indonesian and Filipino, it means hope. Whatever the language, the meanings are inspiring and beautiful.

LT: *ASA is currently one of the biggest lighting studios in the region with more than 30 designers and 2 studios in Bangkok and Saigon. How did the firm grow so big?*

Thanh: We have found that the key to success is our honest drive for the best design combined with a deep understanding of our clients and their projects. This formula has always been with us and helped us to grow and succeed.

The best design is honest. We are honest about what we do: about the idea, the approach, and the method. Honesty means we are true to the purposes of how a space should be illuminated, how the users will feel, and how it inspires people. This requires a personal touch: Every client is treated as an

individual and every demand is considered. Every project is unique, so every design is bespoke.

Accessible design is good design. We believe that unrealisable and unrealistic designs frustrate people. After all, the first principle of design is to function. We make the best designs based on what is available locally. Being local is not only about materials, culture, and customs; it is also about the available skills, resources, time, and understanding. Being local is about making something that lasts for the people who live and work alongside it.

This approach has enabled us to work on many successful projects in different contexts. We have two studios, one in Vietnam and one in Thailand, and our colleagues are from different professional backgrounds and nationalities, working on projects in many countries. While the working cultures are somehow different, we bring to our design the same values and understanding. That makes our design appreciated everywhere.

**LIM Tower****Location:** Ho Chi Minh City, Vietnam**Architect:** P&T Architects*Photo Credit: ASA Studios*

LT: *You shared that you are working in the Middle East, India, Thailand, Cambodia, Philippines and Vietnam. Can you name me a few of your notable projects that are completed or ongoing?*

Thanh: We have won some prestigious design awards, but we are perhaps best known for our work on the Dragon Bridge in Da Nang, Vietnam. Deutsches Haus in Ho Chi Minh City is also a nice project which has been featured in many design magazines. We have worked on many award-winning hospitality projects such as the Sorae, San Fou Lounge, Mizumi Westlake, and Intercontinental Resort Phu Quoc.

At the moment, we are working on some great projects in India. We are designing some high-end condominiums – one in Thane on a massive scale and some ultra-luxury, super tall buildings in downtown Mumbai. We are also renovating a British colonial building into a high-end office complex in Mumbai. We want to revive the glory of this beautiful Art-deco building but with a contemporary design.

In Cambodia, we are designing a new national museum, converting and expanding a French colonial complex in the heart of the Unesco heritage-listed old town of Battambang. These boutique projects are incredibly inspiring. We not only get to know India and Cambodia, but we also understand British and French colonial buildings. This makes our job very interesting.

We are also working on some mega-projects, like Mandani Bay, a waterfront, 20-hectare mixed-use high-density development under construction in Cebu, the Philippines. Meanwhile, we have completed the first phase of Vega City, a 43.8-hectare complex of five hotels and a casino with more than 2,000 rooms on the central coast of Vietnam.

Best of all, we love working on hospitality projects. This is where our creativity is challenged best. We are design partners for some of the biggest international hotel operators. This year alone, we have completed the first Crowne Plaza in Vinh Yen, renovation of Le Meridien Hotel Saigon, and Intercontinental Hotel Saigon.

We are now working on the brand new, world's-biggest Marriott-branded residences being built in Ho Chi Minh City as well as a new J.W. Marriott in Nha Trang. We also have some exciting projects coming up on the island of Phu Quoc, like the MGallery Resort being built in the national forest, an ultra-luxury Park Hyatt, and LUXNAM, the first LUX-branded resort in Vietnam and the first and only hotel to be built over water.

LT: *What are the opportunities and challenges of a lighting designer like you, today?*

Thanh: Globalisation is both a threat and an opportunity. We are now working in very different parts of the world, with very different contexts. We need to work our best to build a universal approach to meet varying demands while still delivering unique designs and identities. Building a strong identity for a company working globally is not an easy task.

Technology also presents both opportunities and challenges for lighting design. We are thrilled to explore the new features and comfort that new tech brings; we are excited about these new possibilities. However, at the same time, we care about bringing honest design for humans, preserving nature, and promoting locals.

Everyone is excited about AI (Artificial Intelligence). One part of lighting design is very technical, so perhaps it can be done by AI in future. However, another part is artistic and emotional. Finding the right balance to make our job easier but not less exciting is perhaps the challenge.

Recent drastic changes like pandemics, wars, and global uncertainty have not spared the lighting design industry. However, it also creates a strong motivation to take on these challenges and transform ourselves, following our company's core values, to always be creative, innovative, adaptable, and relevant to globally honest design.



Dragon Bridge
Location: Da Nang, Vietnam
Architect: Louis Berger
Photo Credit: Robert Whitworth



MGallery Hotel Perle d'Orient Cat Ba
Location: Cat Ba Island, Vietnam
Architect: AA
Photo Credit: ASA Studios



Soraie Restaurant & Lounge
Location: HCMC, Vietnam
Interior Designer: LTW
Photo Credit: ASA Studios

Arolla Aqua: A powerful, complete, compact IP66 LED profile moving head, with outstanding light output

In recent years, lighting professionals have made increasingly precise demands, and manufacturers have geared their production to certain market trends which have become impossible to ignore.

One of these, IP66 weather-resistant lights, has been taking an ever-greater market share. They are not only seen as the perfect fixture for outdoor events, but also as ideal lights for indoor productions, since they are protected against the harmful effects of dust and a variety of other external agents, and therefore require less maintenance. In the long run, this results in time and cost savings, and a better return on investment.

The Arolla Aqua is Claypaky's top-of-the-range weather-resistant light. It is a true workhorse with IP66 rating and technical and construction features which were once unimaginable for this kind of light.

Claypaky's R&D department's challenge was principally to design a high-power, high-brightness fixture with top-level performance while at the same time limiting its weight and size. The Arolla Aqua's dimensions are indeed remarkable: less than 750 mm in height and only 38.5 kg in weight, thus enabling fast pan and tilt movements.

The Arolla Aqua fits a white 900 W (7000 K) LED light source, capable of a 40,000-lumen output. This means it can compete with both high-power-range lights (given its output) and medium-power-range lights (given its small size and weight).

Its uniform light beam is another key feature. The high quality of the beam, its density, and the total absence of spurious lights can be appreciated with the naked eye, and its

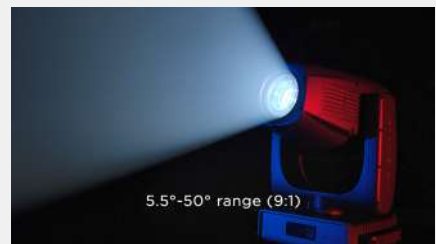
zoom can be adjusted over a linear 5.5°-50° range (9:1).

The Arolla Aqua boasts an effects section consisting of two gobo wheels (one of which rotating) with very high-definition dichroic glass gobos; an innovative animation wheel which brings out some of the most typical effects of this feature, a four-sided prism, a 16-blade motorized iris, a framing system on four focal planes with rotation between +/- 60°, and a separate macro control channel.

Thanks to the company's exclusive "Go-Bright" technology, there is no light loss or colour shift when gobos are inserted into the beam. The gobos can be swapped and morphed with each other and the animation wheel to create new, exciting textures.

The colour section consists of CMY colour mixing with 16-bit control, linear CTO and a six-colour wheel (including an 88+ CRI enhancement filter). This outstanding moving head comes complete with a soft edge frost filter, flood frost effect, ultra-precise 24-bit digital dimmer, digital stop strobe and four fan operating modes, right up to the highest level of quietness.

The Arolla Aqua sets a new benchmark for professionals who are looking for a high-power IP66 light which is compact, reliable and complete in every aspect, with top performance and an unparalleled cost-performance ratio.



ARTELEA Cradle to Cradle Certified®, free-standing office luminaire – for uncompromising flexibility and sustainability

A real chameleon, Zumtobel's slimline free-standing office luminaire ARTELEA adapts to a wide variety of New Work scenarios while never compromising on sustainability. It combines an understated appearance and high lumen output of up to 38,000 lumen in a luminaire that is both timeless and future-proof. One pole, two different sizes of luminaire heads in various configurations plus a wall luminaire equals up to nine possible variations – all individual but with a uniform look that facilitates a consistent office design language and maximum creative freedom.

Sustainable and modular

All aspects of ARTELEA have been designed with flexibility and circularity in mind, with the help of materials that are up to 80 percent recyclable and a product design that is versatile enough to adapt to today's New Work environments. The luminaire was developed in accordance with the Zumtobel Circular Design Rules (CDRs) and is both the first Zumtobel product and one of the first luminaires on the market to receive the Cradle to Cradle Certified® Product Standard Version 4.0 certification.



Photo credit: Zumtobel

It was designed entirely in line with circular product design principles, with high-quality raw materials such as aluminium, steel and sheet steel used to ensure they can be separated and reused at the end of the free-standing luminaire's useful life. ARTELEA's electronics and optics enable an average service life of 100,000 hours. Based on usage over a standard 40-hour work week, this free-standing luminaire will last for around 48 years.

Conversion kits for smart light retrofitting

All of ARTELEA's individual elements can be easily accessed when the luminaires are being retrofitted, while their modular design means they are quick and convenient to remove, in keeping with the 'Design for Disassembly' concept. The entire luminaire head including the individual components such as the optics or electronics are simple to replace. Most of the components are suitable for a second or even a third usage phase which reduces not only material consumption and the associated resources, but also CO₂ emissions: the reuse of components enables approx. 74.2 kg of CO₂ to be saved.

Using ARTELEA and swarm technology to create an 'swarm of light'

ARTELEA is equipped with an interface for swarm, a new Zumtobel technology that automatically connects

individual free-standing luminaires. If a luminaire detects the presence of a person, it is activated and sends a notification to the luminaires in its immediate vicinity, which automatically dim up to pre-defined levels. In the office, the presence-detecting luminaire acts as a central point of light and works with the gently dimmed luminaires in the surrounding area to create an atmosphere that combines safety, a feeling of well-being and energy efficiency.

swarm technology uses the ceiling reflection to send an infrared broadcast between different luminaires. With a diameter of just 35 millimetres, the flat swarm module can be connected to any ARTELEA free-standing luminaire using the plug-and-play function – no programming required. Via infrared, swarm automatically establishes a connection to the surrounding luminaires.

Continuously dimmable light that reflects the rhythms of the natural world

To provide effective support for office personnel working with display screen equipment, ARTELEA uses tunableWhite with a real-time clock function: light colours and intensities that synchronise with the daylight help improve concentration and performance. The satinised micropismatic optics of the luminaire reduce the subjective perception of glare by distributing the light uniformly over the entire desk.

ARTELEA is fully compliant with the updated standard for lighting in indoor workplaces (DIN EN 12464-1:2021-11). However, in order to take into account the needs of individual users – within the legal requirements – employees can adjust basic settings for themselves, ensuring maximum self-efficacy and increasing well-being.

ARTELEA is the work of EOOS Design. Harald Gründl, partner at EOOS Design, on the product features of the luminaire: "The ARTELEA free-standing luminaire series adheres closely to the criteria of circular design. ARTELEA can be easily maintained or subsequently upgraded with state-of-the-art lighting technology. It comes in individually adaptable modules, is easy to modify and can be reconditioned for a significantly extended service life. All the electronics are integrated in the ultra-flat ARTELEA light heads. An innovative docking port system enables the free-standing luminaire to be reconfigured or modified at a later date, making ARTELEA the perfect solution for future-proof, long-lasting and flexible office applications."

SKYLOS – much more than just a classic searchlight!

Large searchlights have written one of the most glorious pages in the history of professional show lighting. Yet today they are considered unviable since many firms are not open to investing in a technology that often has weight, size, operating cost and maintenance drawbacks.

Claypaky's SKYLOS aims to quash these uncertainties and comes with a long list of features and performance specs that make it much more than just a simple searchlight. The Skylos is an extremely versatile fixture in every way,

which will certainly also be appreciated in the touring sector, where LDs are constantly on the look-out for dense, solid beams of light and ever-greater light output.

The Skylos fits a custom 300W white light laser source, which provides an extremely parallel, uniform beam, while attenuating the well-known temperature and safety issues found with units that use Xenon lamps.

Considering the light output, its power consumption is not even close to that of traditional searchlights. With a

power consumption of only 600W, the Skylos has the same light output as a 4000-watt Xenon lamp!

The beam pours out from a large 300mm front lens, specifically designed in Claypaky's R&D department. In combination with the light source, it produces a dense, full-bodied column of light, which is highly visible even from afar. The beam is perfectly uniform and parallel, with no visible hotspots. The beam angle can be adjusted from 0.5° to 5° resulting in exceptional light intensity, which cannot be produced by

a LED or traditional light source.

Its range of effects includes a slot for customisable gobos and a battery of prisms, which distinguishes it from other fixtures. On one wheel, we find a rotating six-sided prism and a rotating five-sided linear prism. And on a second level, we find a fixed 4-sided prism, which can be superimposed on the other two to achieve a breathtaking Moonflower effect and many other fantastic never-seen-before mid-air effects. Laser technology adds outstanding optical contrast, making all light projections razor-sharp.

Other Skylos features include a 15-colour wheel, with colour filters designed to preserve and optimize the high brightness of the light beam, a 5° frost filter for a soft edge effect which can be used in various applications, a 24-bit digital dimmer and a digital stop-strobe effect.

If you consider its light output and



the size of the front lens, the body of this remarkable light is lightweight and compact. This allows the unit both to be moved with relative ease in any environment, and to be rigged on trusses for use on tours.

Its compactness also makes for fast pan and tilt movements, perfect for live shows. It is truly worlds apart from the

slow, elephantine movements of many of its predecessors!

Its body is IP66 protection rated and marine grade. So, it is capable of working in any weather conditions and in environments with high marine salinity and a high risk of corrosion. A sophisticated internal heating system designed specifically for this product means it can even work at very low temperatures (as low as -40°).

The Skylos goes far beyond the legacy of classic searchlights and opens up unexplored market opportunities. It is the ideal light for every environment and field of use, from touring and large events to theme parks and fixed installations, thanks to its innovative, perfectly safe light source, top-notch performance with low power consumption, very low maintenance requirements, and specially designed body which makes it suitable for use in even the most extreme conditions.

LEDtronics expands industrial controls LED offerings with new panel indicator series for direct incandescent replacement

Torrance, California, USA – Continuing to expand its offerings of control panel LEDs for industrial controls and retrofit panel mount applications, LEDtronics introduces its PTx470 Series of direct incandescent-replacement LED Panel Indicators for front mounting, bolt-in and non-relampable applications.

With slotted 0.05 inch tab terminals for panels no thicker than 0.180 inch (4.57mm) and a choice of top hat, dome or flat lens types, this latest series for mounting in holes of Ø0.469 inch (Ø11.9mm) diameter is an excellent choice for machine tool applications as well as heating, ventilation and air-conditioning control panels; medical equipment; and signal and pilot lights, among many others.

Offering energy savings with a much lower power consumption of only 0.6 watts, these indicator lamps provide sunlight-visible LED light in super yellow, super red or aqua green colours, with a viewing angle of 10 degrees for the dome lens units, and 10 to 100 degrees for the flat and top-hat lens units, depending on lens colour.

They are rated for 24/28VDC input voltage, providing illumination of 1 to 4 lumens and a luminous intensity ranging from 0.20 to 2.45 maximum candela. The series operates on an input current of 0.020 to 0.021 amps. The PTx470 Series comes in black, anodized aluminum housing; a slotted 0.05-inch, nickel-plated carbon tab terminal, and a polycarbonate lens. An integrated series resistor prevents short circuiting, eliminating the necessity of special fuses.

Solid-state design makes LEDs impervious to electrical and mechanical shock, vibration, frequent switching and



environmental extremes. These durable lamps provide years of reliable performance with sustained colour fidelity and energy efficiency, with LED lumen maintenance of greater than 70 percent and a lifespan of 100,000 hours! They boast IP65 protection rating – they are water-tight and splash-proof for outdoor locations, operating in a wide temperature range of -30°C to +50°C (-22°F to 122°F).

The new LEDtronics series PTD470-028B/WP (dome lens), PTS470-028B/WP (flat lens) PTF470-028B/WP (top-hat lens) panel mount indicator LED lamps come with an unconditional 3-year U.S. factory warranty, and are available through LEDtronics distributors. Other standard voltage and LED colour options are available for large quantities and qualified applications.

MARK Architectural Lighting launches MAGELLAN family Of luminaires



MARK Architectural Lighting, an established leader in architectural lighting solutions, has released MAGELLAN™, a new family of large-format, architectural, circular luminaires. Delivering a clean, modern style across a variety of sizes and configurations, Magellan luminaires offer a wide variety of features and aesthetics that provide visual comfort in architectural spaces.

The Magellan family has evolved to include pendants, ceiling-surface, and recessed ceiling luminaires, as well as surface and recessed wall-mounted solutions. These new luminaires are designed to be impeccably clean with no seams or visual disruptions in their circular form. The result is an elegant drum-style luminaire that appears to be carved from one solid form.

Featuring nLight® and nLight AIR control options, Magellan luminaires are simple to specify, design, install, and set up. Unlock network capabilities such as firmware updates, advanced scheduling, remote programming, and BACnet® integration with nLight enabled luminaires. Optional eldoLED® proprietary driver technology creates seamless transitions for flicker-safe deep-dimming, provides consistent colour while dimming, and further facilitates embedded lighting control schemes.

Innovation continues into the lens design, which is offered in two distinct visual styles: flush and edge view. The flush lens is fully captured by the integral frame of the luminaire and sits flush with the direct surface plane. Flush lenses are available in flat or convex designs, offering a variety of fully luminous aesthetic options. Alternatively, Magellan offers an edge view lens that floats just below the frame of the luminaire and creates a luminous plane with a visible lit edge.



The edge view lens is available in flat, convex, or concave forms, offering exciting new looks.

Magellan is the first luminaire from MARK Architectural Lighting to offer a sound reducing acoustic solution on the direct plane of the luminaire. Available in 19 colours, the sound absorbing material provides a noise reduction coefficient rating of 0.45 - 0.9 and consists of 1/2" thick polyester felt that is 100 percent recyclable. The material is Red List Free.

The elegant simplicity of the Magellan luminaire combined with the variety of mounting locations, sizes, lenses, and best-in-class performance brings you the flexibility and utility you have come to expect from MARK Architectural Lighting, all in a well-designed, efficient, and reliable platform.

'Tee' lighting collection by Valerio Cometti+V12 design for Masiero



Tee indoor Lighting - Ambiance

The new 'Tee' lighting collection by Valerio Cometti+V12 design for Masiero is the result of the search for the meeting point between geometric rigour and class, aesthetically marked by the curved line.

The luminous glass spheres, which enhance the preciousness and enhance the light, are delicately animated by an incision of parallel spiral lines, a delicate decoration that seems to give the globes a slow rotation, like a dance made up of signs of light.

Tubular metal stems with a round cross-section, with coppered gold galvanic finishing, at the end of which a truncated metal cone holds a sphere. An organic shape recalling the delicacy of the calla lily flower, alone or in bunches, depending on the type of Tee, which varies from suspended ceiling lights to floor, table, wall and ground versions.

The aim was to create a family that is extremely flexible in the way it can be used and modular in its configurations, so that it can meet the lighting needs of any architectural space.

Structure: coppered gold galvanized metal
Diffuser: amber Murano triplex glass with spiral decoration



Tee indoor Lighting - Still

Turn it – suspension, wall lamp

Design: Rocco Este

Light is the only protagonist of the Turn it collection, to encourage the maximum integration of light into architecture and space.

A sharp blade, a unifying line. A suspended beam to bind the walls into a union.

Triangular-section profiles made of thin extruded aluminum (16 mm thick) are deliberately designed in the name of total essentiality, reducing themselves to mere function.

Each profile carries and wraps the linear LED strip light bar. Thanks to a simple and intuitive mechanism, the bar, rotating its two pivots at the ends in the wall version, draws different configurations of light, direct or reflected, in space.

A continuous element, single or modular, horizontal or vertical.

The suspension structure is modular and modular according to various combinations thanks to angular and linear joints, as well as the possibility of inserting spotlights from below, thanks to a sliding system, inside the profile.

With multiple elements of Turn It, countless configurations can be created for every design need:

- Aluminum frame, painted white or black.
- Strip led backlighting included and optional spotlight.

Dimensions:

- Single suspension in lengths, modules of 110 cm or 154 cm
- Wall sconce length available in 150 cm or 200 cm



Professional outdoor lighting: new products in 2023 from Linea Light Group

The I-LèD Professional collection boasts complete and co-ordinated programmes for professional outdoor LED illumination to enhance the urban lighting landscape, respecting the continuity between architecture, passageways and landscapes. Outdoor lighting products such as pole and post heads, immersion lamps, floodlights and linear components are the ideal solution for satisfying all requirements of a complete lighting project.

D-WAVE

The first major innovation is the D-Wave solution, as the first flexible two-axis lighting system. D-Wave is the new frontier in linear outdoor signage. Thanks to the extreme flexibility of the fully-recyclable composite material, it can be adapted to any perimeter, even the most complex and sinuous. For this reason, D-Wave is the system with the greatest flexibility and adaptability available on the market!



D-Wave. Photo courtesy of Linea Light Group.

BUZZER

The second innovation is Buzzer, the bollard (or stake) designed to illuminate pedestrian or vehicular pathways along with contemporary landscape projects. The light source, positioned completely under the head, gives Buzzer a very high degree of anti-glare visual comfort and homogeneous light distribution. Buzzer revolutionises the concept of visual comfort with an enveloping, shadow-free light. Indeed, its glare is extremely low, boasting extraordinarily powerful illumination.

CUBIT

The third revolution is Cubit, a simple luminaire that becomes the star of your lighting project thanks to its extremely clean aesthetics. Formal simplicity conceals sophisticated, state-of-the-art technology in terms of lighting, optics and performance. The various combinations envisaged offer the



Buzzer. Photo courtesy of Linea Light Group.

designer a wide range to work with, playing with symmetries and apertures. The name “Cubit” is the Piedmontese word for traditional perched houses with characteristic ‘cubed’ architecture. For wall installations, Cubit is able narrate a location by emphasising the distinctive architectural facets of a building or can transform an urban landscape by adding luminous markings or patterns on vertical surfaces.



Cubit. Photo courtesy of Linea Light Group.



ABS

Architecture & Building Services 2023

Designing a Safe and Resilient Built Environment

15 - 17
Nov 2023

MARINA BAY SANDS SINGAPORE
EXPO & CONVENTION CENTRE
EXHIBITION HALLS B & C (LEVEL 1)



Architecture



Design



Facility Management



Safety & Security

Integrating 9 Conferences
and 6 Exhibitions in 1 Premier Built
Environment Event

 Architecture Building Services
 ABS - Architecture Building Services
www.architecturebuildingservices.com



 **ArchXpo 2023**
The 9th International Exhibition for Architecture,
Building Products & Solutions

 **INTERNATIONAL FACILITY
MANAGEMENT EXPO 2023**
The 10th International Facility Management
Technology & Solutions Exhibition

 **FIRE &
DISASTER
ASIA 2023
SINGAPORE**
THE 19th INTERNATIONAL FIRE PREVENTION &

 **SAFETY &
SECURITY
ASIA 2023
SINGAPORE**
THE 21st INTERNATIONAL SAFETY & SECURITY
EQUIPMENT & TECHNOLOGY EXHIBITION

DESIGN ^{ASIA} 2023
The 3rd International Exhibition for Bespoke Products for Asia

 **WORK SAFE
ASIA 2023
SINGAPORE**
THE 9th INTERNATIONAL WORKPLACE
SAFETY EQUIPMENT & TECHNOLOGY EXHIBITION



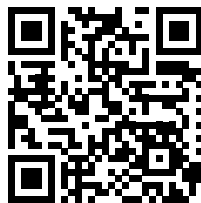
light+
intelligent building
MIDDLE EAST

16 – 18 Jan 2024
Dubai World Trade Centre

Join MENA's
leading event for
lighting, electrical
engineering and
building technology.

Register now

light-intelligentbuilding.com/register



SUBSCRIPTION FORM

Email your order to:
yvonne.ooi@tradelinkmedia.com.sg

PRINT

Please (✓) tick in the boxes.



☐ Southeast Asia Building
Since 1974



☐ Southeast Asia Construction
Since 1994

1 year (6 issues) per magazine

Singapore	SGD\$70.00
Malaysia / Brunei	SGD\$120.00
Asia	SGD\$180.00
America, Europe	SGD\$220.00
Japan, Australia, New Zealand	SGD\$220.00
Middle East	SGD\$220.00

DIGITAL



Bathroom + Kitchen Today
Since 2001

Bathroom + Kitchen Today
is available on digital platform.

<http://bkt.tradelinkmedia.biz>



Lighting Today
Since 2002

Lighting Today
is available on digital platform.
To download free PDF copy,
please visit:

<http://lt.tradelinkmedia.biz>



Security Solutions Today
Since 1992

Security Solutions Today
is available on digital platform.
To download free PDF copy,
please visit:

<http://sst.tradelinkmedia.biz>

Personal Particulars

Name:

Position:

Company:

Address:

Tel:

E-Mail:

IMPORTANT

Please commence my subscription in
(month/year)

Professionals (choose one):

Architect

Landscape Architect

Interior Designer

Developer/Owner

Property Manager

Manufacturer/Supplier

Engineer

Others

Bank transfer payable to:

Trade Link Media Pte Ltd

Bank Details

Account Name:

Trade Link Media Pte Ltd

Account Number:

033-016888-8

Name of Beneficiary Bank:

DBS Bank

Address of Beneficiary Bank:

12 Marina Boulevard, DBS Asia Central,
Marina Bay Financial Centre Tower 3,
Singapore 018982

Country:

Singapore

SWIFT Address/Code:

DBSSSGSG

PAYNOW to:

Trade Link Media Pte Ltd

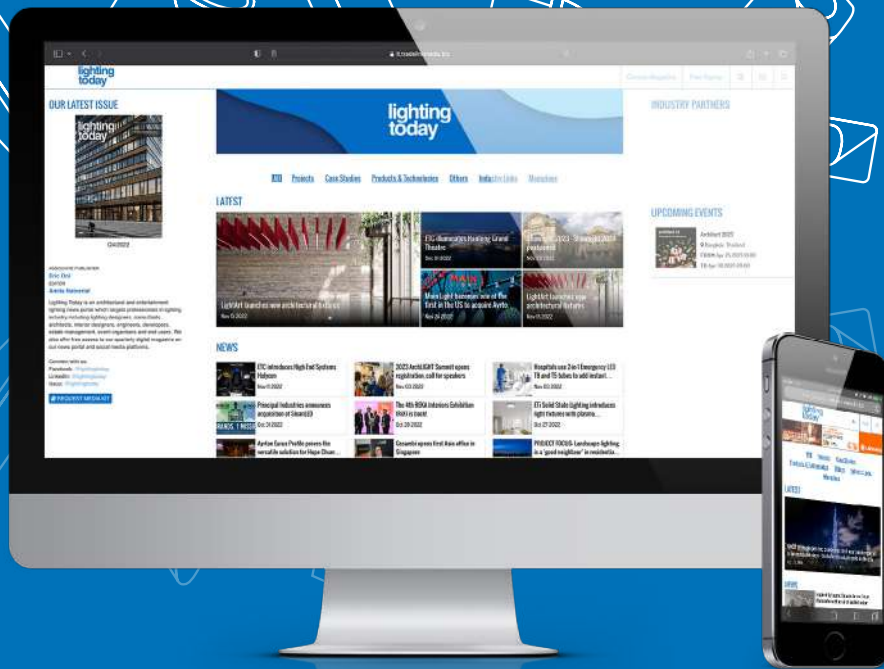
**PAY
NOW**



PAYNOW option is
applicable for Singapore
companies only.

Company Registration
Number: 199204277K

* GST inclusive (GST Reg. No: M2-0108708-2)
* GST inclusive (GST Reg. No: M2-0108708-2)



ADVERTISE WITH US TODAY!

Email us at info@tradelinkmedia.com.sg



Scan to visit our website

